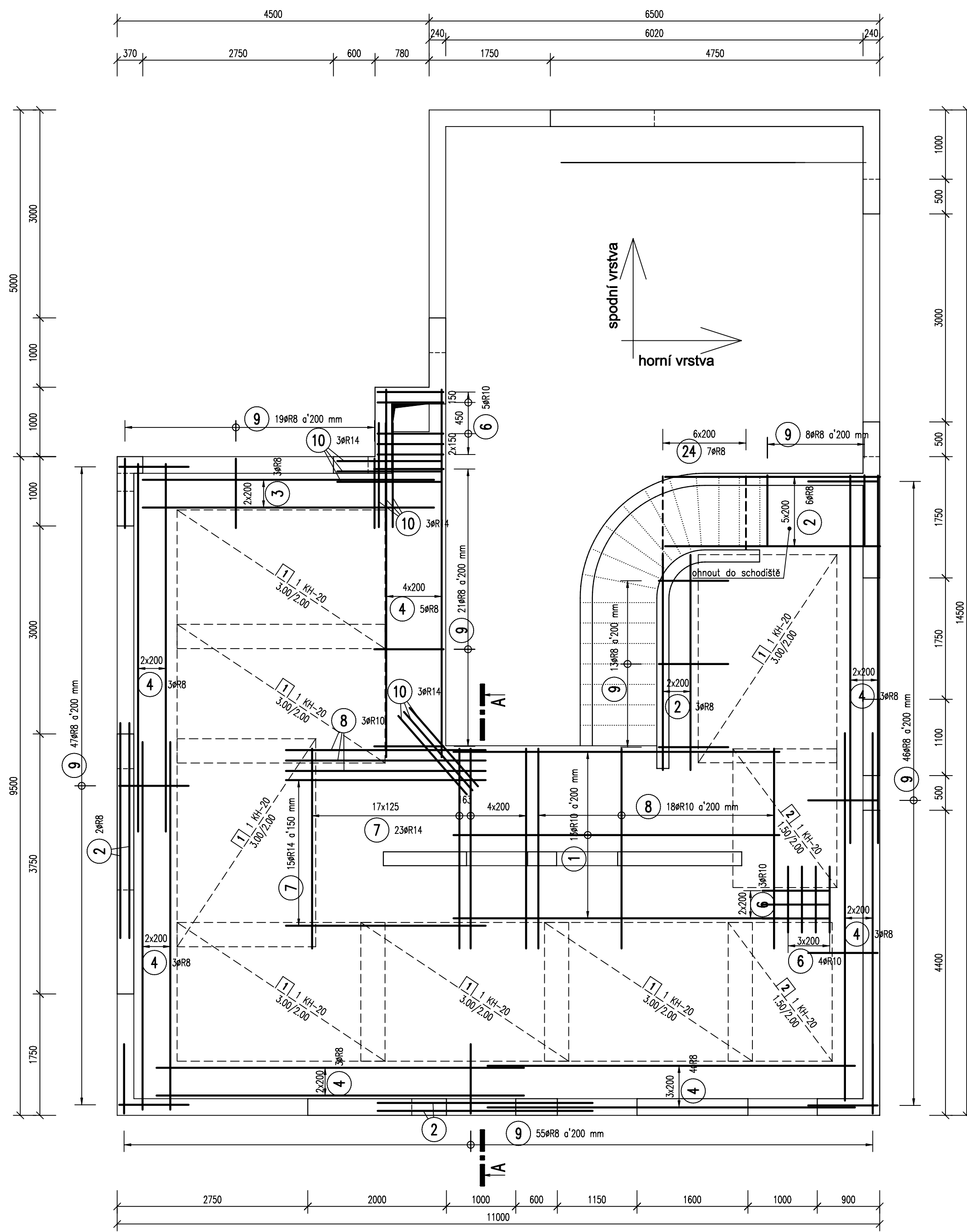
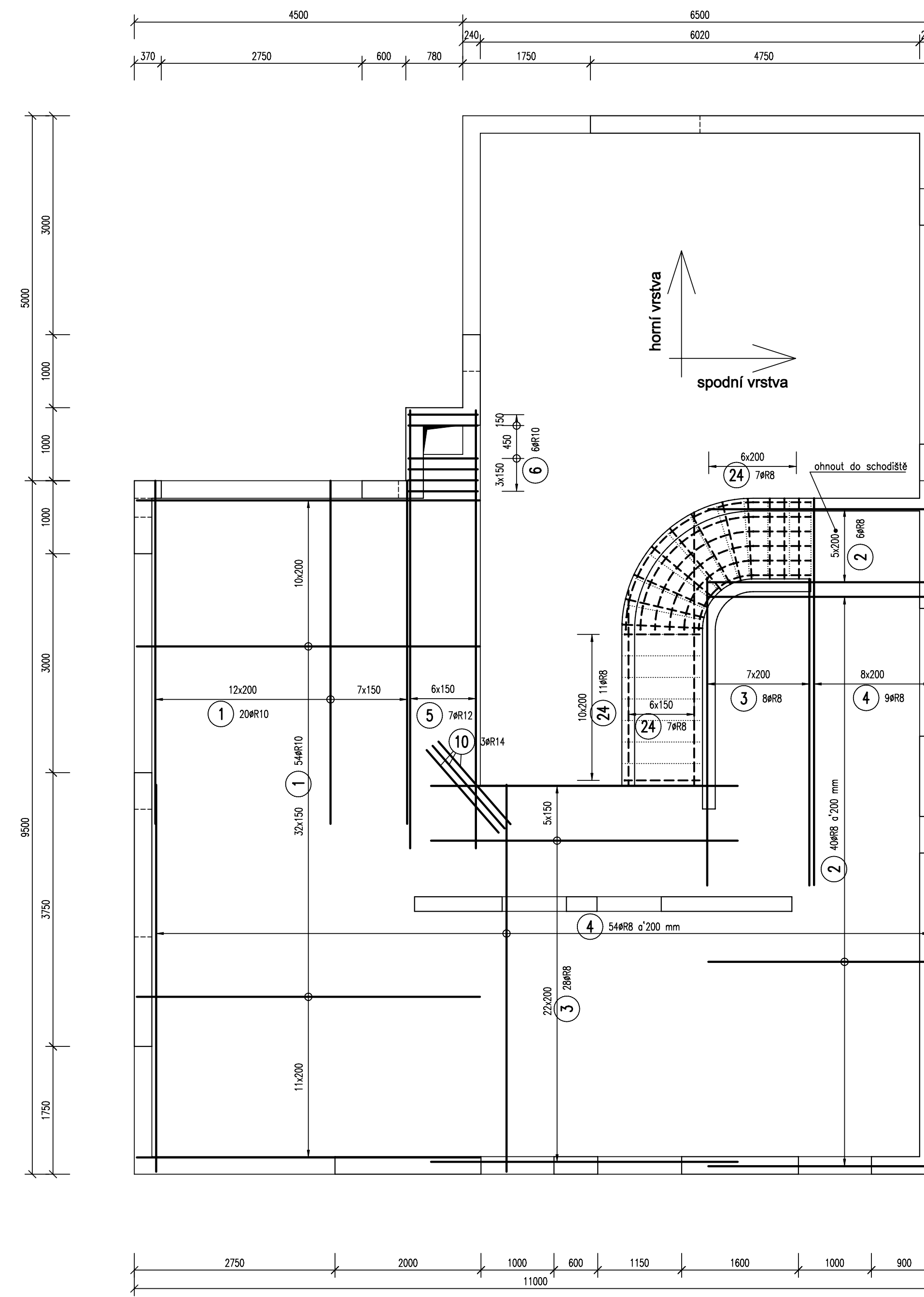


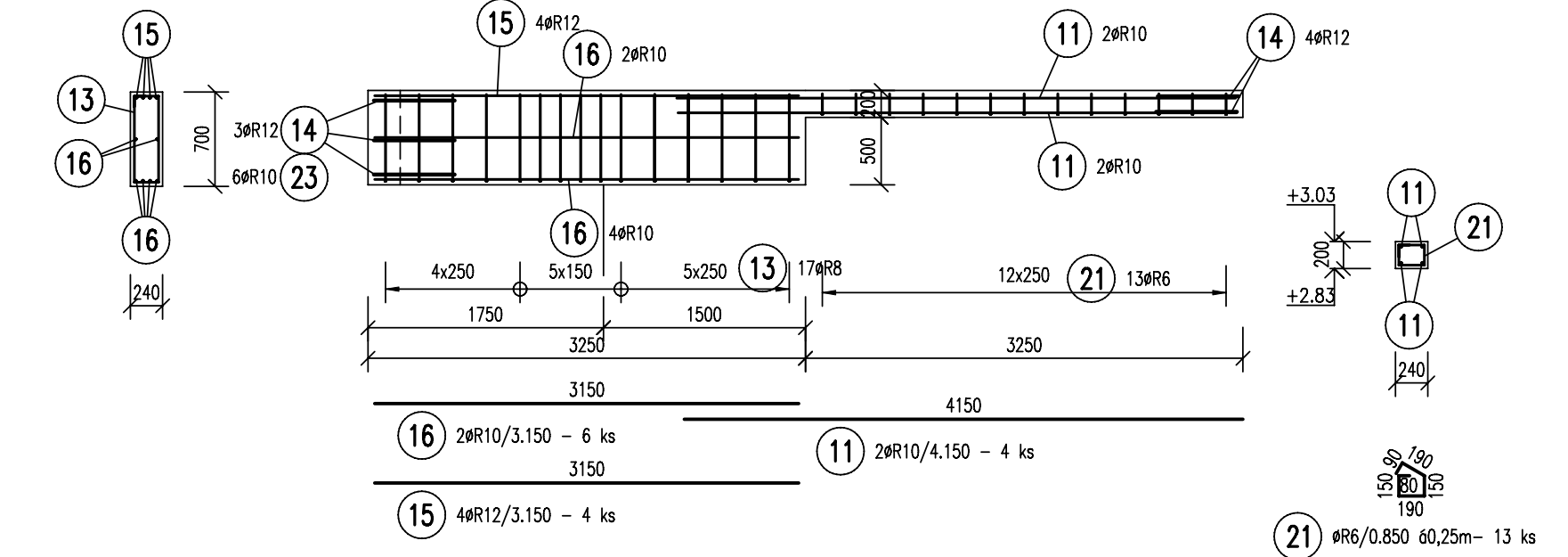
HORNÍ VÝZTUŽ



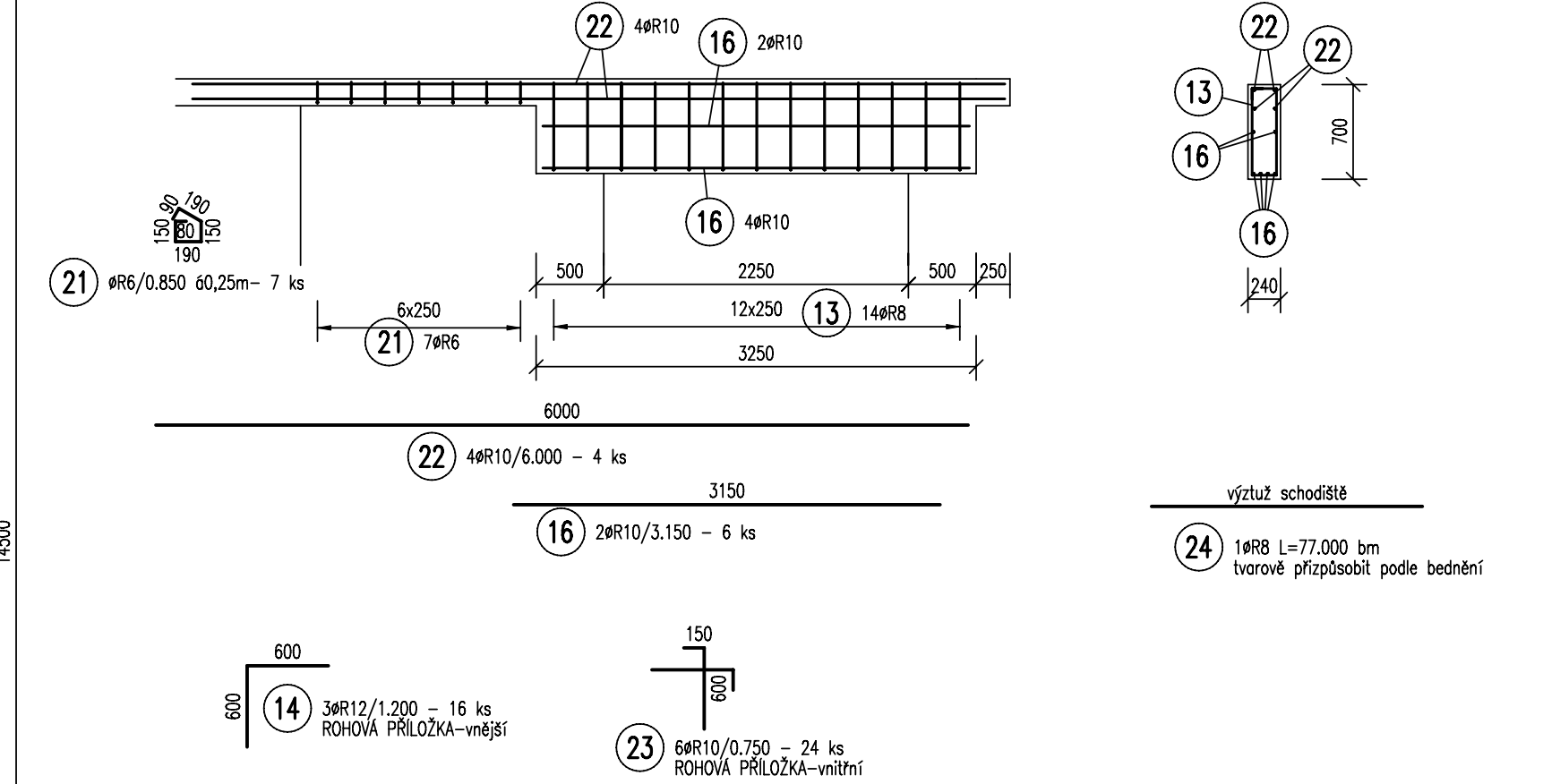
DOLNÍ VÝZTUŽ



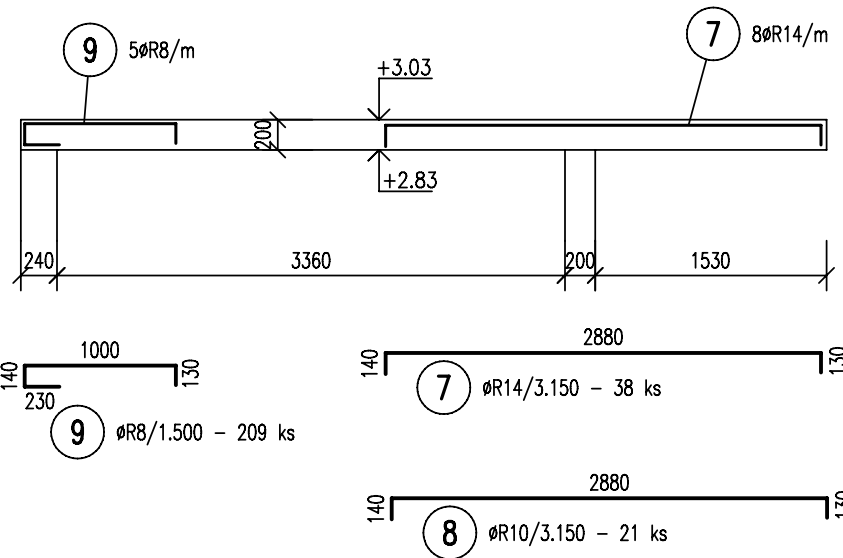
PRŮVLAK P6 - 1x



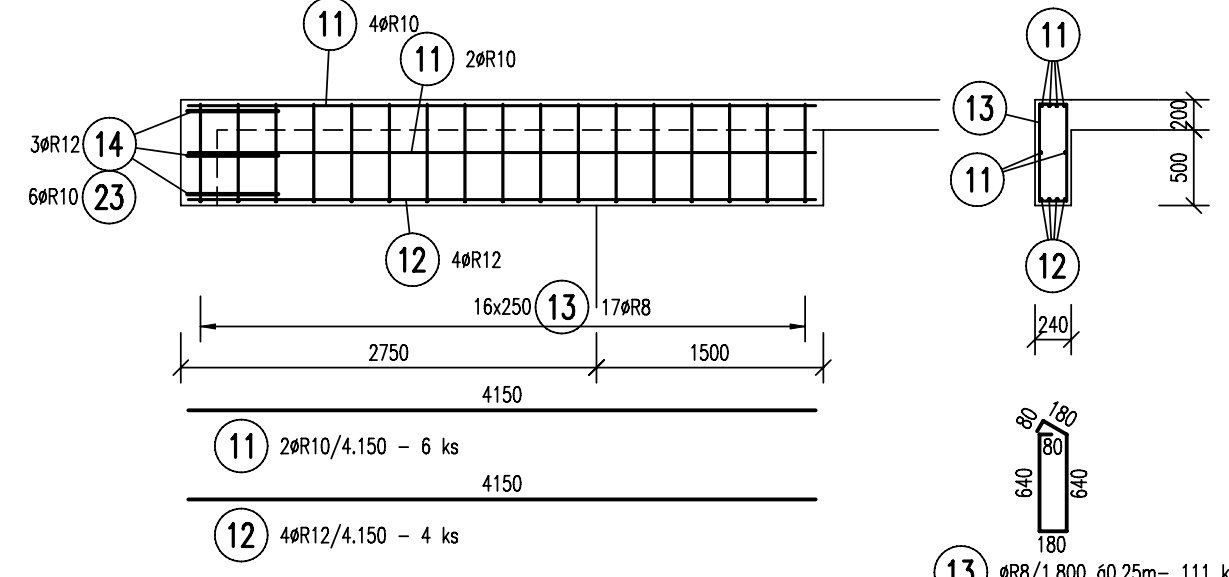
PRŮVLAK P7 - 1x



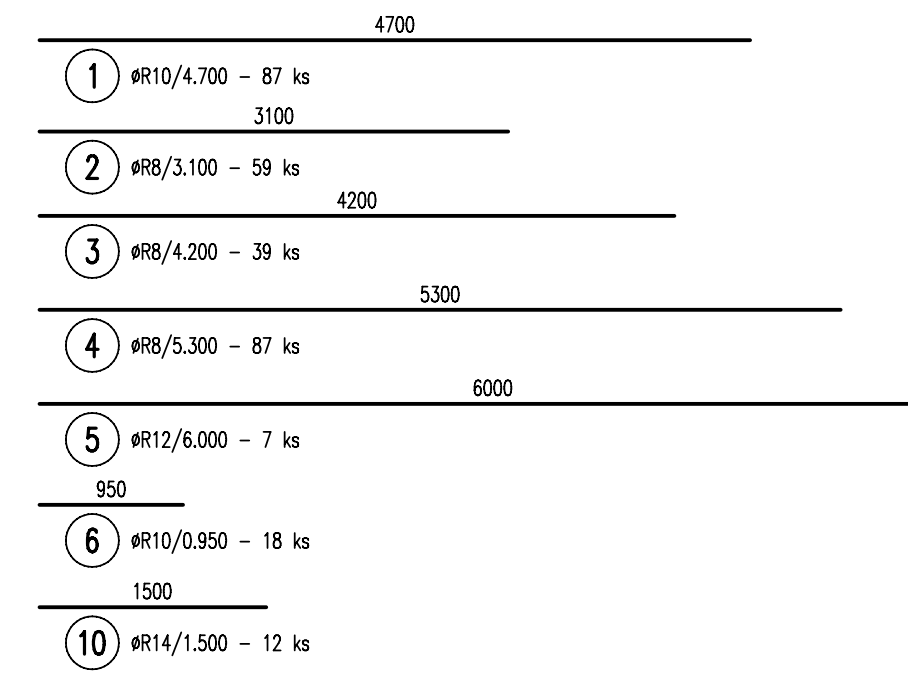
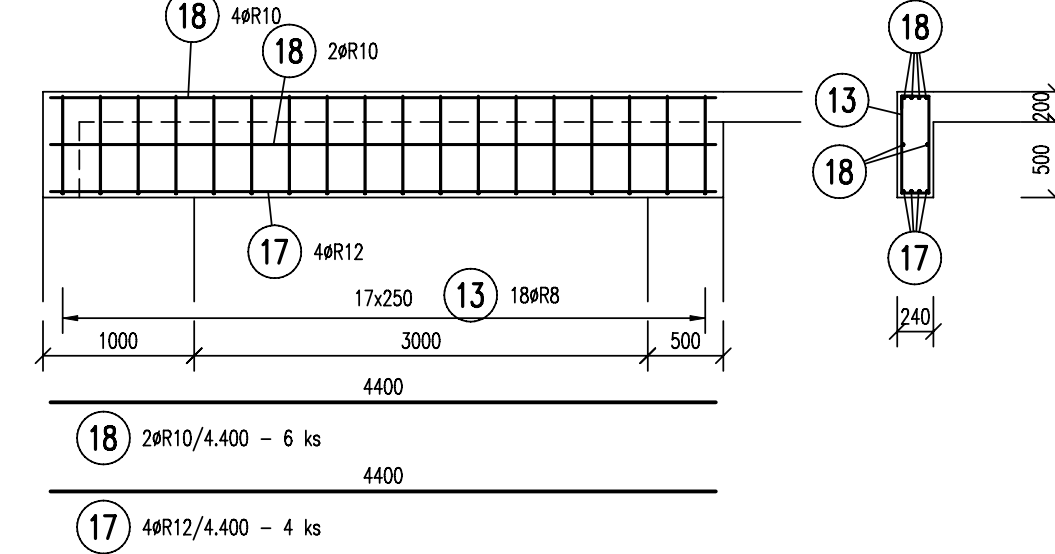
ŘEZ A-A



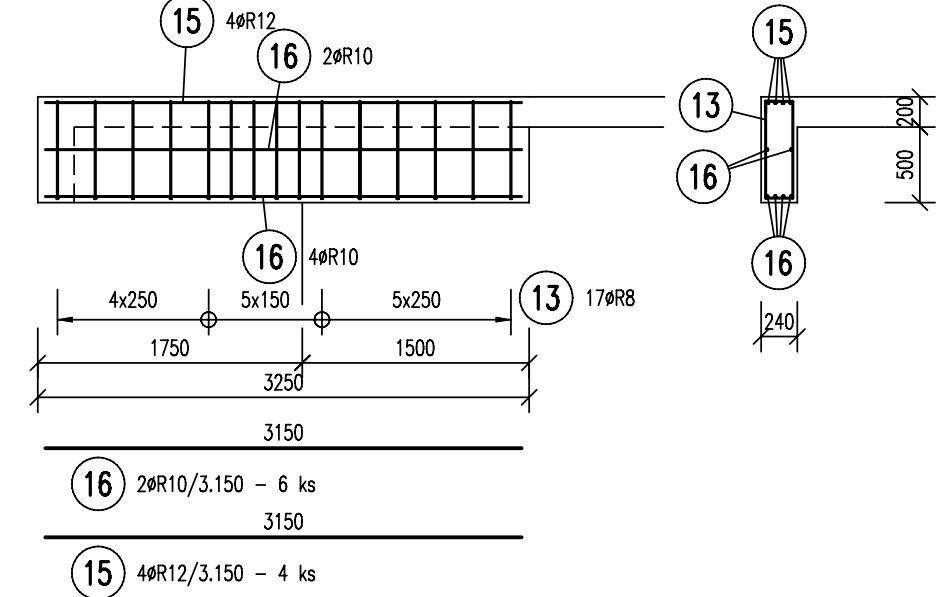
PRŮVLAK P1 - 1x



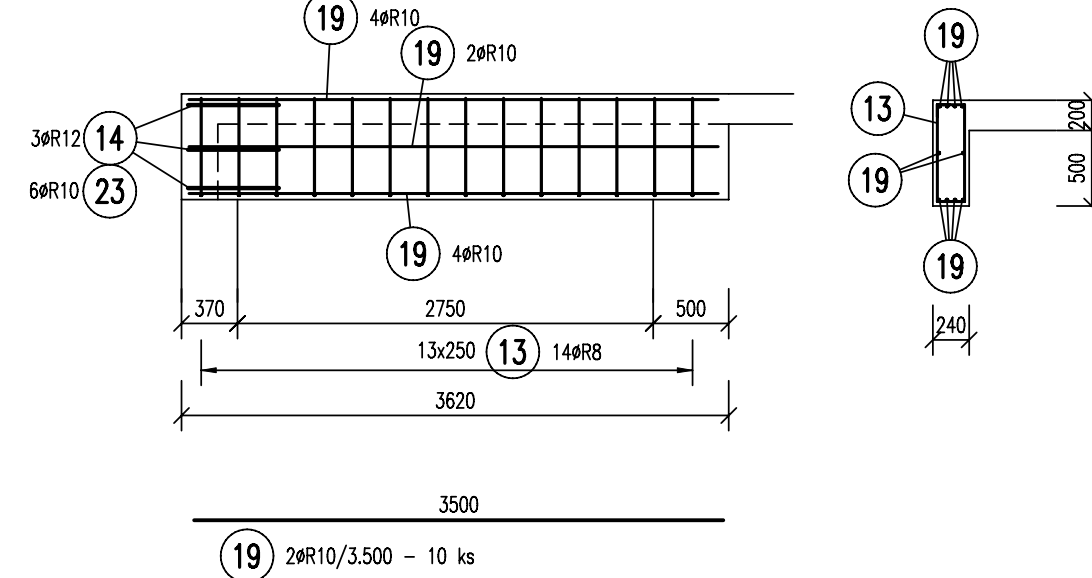
PRŮVLAK P3 - 1x



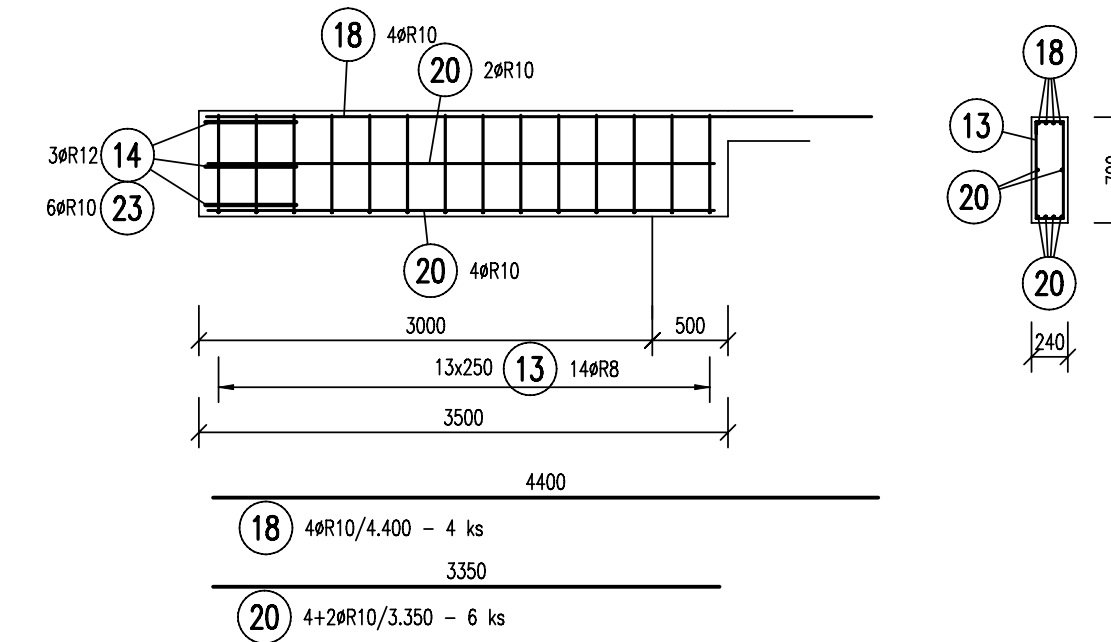
PRŮVLAK P2 - 1x



PRŮVLAK P4 - 1x



PRŮVLAK P5 - 1x



VÝKAZ VÝZTUŽE

| č.p. | # | Délka [m] | Počet | Délka [m] | | | | | |
|----------------------------|-----|-----------|-------|-----------|---------|-----------|---------|---------|---------|
| | | | | R6 | R8 | R10 | R12 | R14 | |
| 1 | R10 | 4,70 | 87 | | | 408,900 | | | |
| 2 | HR8 | 3,10 | 59 | | 182,900 | | | | |
| 3 | HR8 | 4,20 | 39 | | 163,800 | | | | |
| 4 | HR8 | 5,30 | 87 | | 461,100 | | | | |
| 5 | R12 | 6,00 | 7 | | | | 42,000 | | |
| 6 | R10 | 0,95 | 18 | | | 17,100 | | | |
| 7 | R14 | 3,15 | 38 | | | | | 119,700 | |
| 8 | R10 | 3,15 | 21 | | | 66,150 | | | |
| 9 | HR8 | 1,50 | 209 | | 313,500 | | | | |
| 10 | R14 | 1,50 | 12 | | | | | 18,000 | |
| 11 | R10 | 4,15 | 10 | | | 41,500 | | | |
| 12 | R12 | 4,15 | 4 | | | | | 16,600 | |
| 13 | HR8 | 1,80 | 111 | | 199,800 | | | | |
| 14 | R12 | 1,20 | 16 | | | | 19,200 | | |
| 15 | R12 | 3,15 | 8 | | | | 25,200 | | |
| 16 | R10 | 3,15 | 18 | | | 56,700 | | | |
| 17 | R12 | 4,40 | 4 | | | | | 17,600 | |
| 18 | R10 | 4,40 | 10 | | | 44,000 | | | |
| 19 | R10 | 3,50 | 10 | | | 35,000 | | | |
| 20 | R10 | 3,35 | 6 | | | 20,100 | | | |
| 21 | R6 | 0,85 | 20 | 17,000 | | | | | |
| 22 | R10 | 6,00 | 4 | | | 24,000 | | | |
| 23 | R10 | 0,75 | 24 | | | 18,000 | | | |
| 24 | HR8 | 77,00 | 1 | | 77,000 | | | | |
| Celková délka [m] | | | | | 17,000 | 1,998,100 | 731,450 | 120,600 | 137,700 |
| Specifická hmotnost [kg/m] | | | | | 0,222 | 0,395 | 0,617 | 0,888 | 1,208 |
| Celková hmotnost [kg] | | | | | 3,774 | 552,250 | 451,305 | 107,093 | 166,342 |
| Celková hmotnost [kg] | | | | | | 1280,763 | | | |


VÝKAZ TYPOVÝCH SÍTÍ

| Polž. | KS | Typ sítě | Délka L [m] | Šířka B [m] | Plocha [m ²] |
|---------------------------------------|-----|----------|-------------|-------------|--------------------------|
| 1 | 7,0 | KH-20 | 3,00 | 2,00 | 42,000 |
| 2 | 2,0 | KH-20 | 1,50 | 2,00 | 6,000 |
| Celková plocha [m ²] | | | | | |
| 48,000 | | | | | |
| Specifická hmotnost [kg/m] | | | | | |
| 3,330 | | | | | |
| Celková hmotnost podle typu sítě [kg] | | | | | |
| 145,440 | | | | | |
| Celková hmotnost [kg] | | | | | |
| 145,440 | | | | | |

BETON C20/25 XC1 OCEL 10505(R), KARI KRYTÍ 25 mm

POZNÁMKA:

- PROSTUPY STROPEM OVĚRIT DLE VÝKRESŮ PROFESÍ (ÚT, ZT, EL)
- K ZAJIŠTĚNÍ POLOHY VÝZTUŽE A PŘEDEPSANÉHO KRYTÍ POUŽÍT SYSTÉMOVÝCH PRVKŮ DLE ZVYKLOSTÍ DODAVATELE (výška distančních vlnovek h=110 mm)

| | | |
|------------------------|--|--|
| Zodp.projektant | ING. BOUDA |  Ing. Josef BOUDA IČO: 67021557, e-mail: pepary@volny.cz, Tel.: 57 794 1818, mob. 777 250 102 |
| Vypracoval | ING. BOUDA | |
| stavba | RD ve Vážanech, ul. Zvonková, Vážany u Kroměříže | |
| Výztuž stropu nad 1.NP | | datum 3/2012 mšř.: 1:50 č.v. 02-7 |